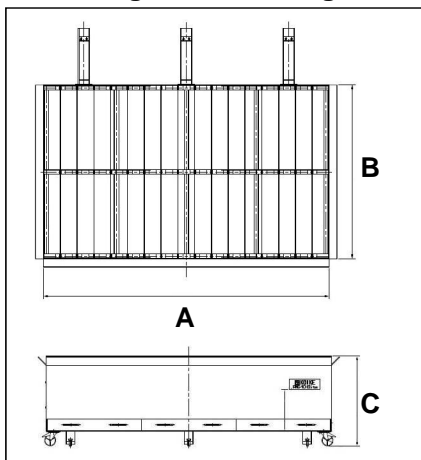


## ■ Cutting Table Drawing



## ■ Cutting Table Dimensions

Unit [mm]

Cutting Area	A	B	C
1,550 x 1,050	1,550	1,050	800
1,550 x 1,300	1,550	1,300	800
1,550 x 1,550	1,550	1,550	800
2,550 x 1,050	2,550	1,050	800
2,550 x 1,300	2,550	1,300	800
2,550 x 1,550	2,550	1,550	800
3,050 x 1,050	3,050	1,050	800
3,050 x 1,300	3,050	1,300	800
3,050 x 1,550	3,050	1,550	800

\*Cutting table is an optional accessories.

# PNC-10 Elite

## Portable NC Cutting Machine



## ■ Machine Specifications

Model	PNC-10 Elite			
Machine body	Type	1000	1250	1500
	Transverse bar length	1,500mm	1,750mm	2,000mm
	Effective cutting width	1,000mm	1,250mm	1,500mm
	Longitudinal rail length	2,000mm, 3,000mm, 3,500mm selectable		
	Effective cutting length	1,500mm, 2,500mm, 3,000mm selectable		
	Rapid speed	3,000mm		
	Cutting speed	100-2,000mm		
	Supply voltage	Single phase, 110V or 220V/230V selectable by internal switch		
	Heat shield plate	Provided at side of the machine and the torch motor		
Gas cutting	Gas cutting torch	1 set with motorized torch riser		
	Cutting tip	3 seats KOIKE 100 series tip		
	Cutting thickness	Max. cutting thickness is subject to cutting tip size.		
Plasma cutting	Torch holder	1 set with motorized torch riser / Diameter 35mm		
	Available plasma system	Non high frequency arc start type plasma system		
	Plasma cable hold	1 set of Bridge type plasma cable hold arm		
CNC	Model of CNC	KOIKE D420		
	Operation panel	7 inch LCD graphic display and key pad		
	Language	English or Chinese switchable		
	Program input	1 set of USB port		
	Contouring	X / Y 2 axes control		
	Coordinate range	Max. +/- 99,999.999mm		
	Program format	EIA format		
	Shape library	48 patterns		
	Operation function	Dry run, Reverse, Plate alignment, Mirror, etc.		
CAD/CAM	Model	PNC-CAM 2A. [KAP Portable CNC editions with Auto Nesting]		

## Features & Benefits

PNC-10 Elite is simple, economical and sophisticated portable CNC cutting machine.

### ■ CNC Controller

Uses NC code or manual controls to provide X,Y axis movement as well and piercing sequences.

### ■ Performs Various Cuts

Including straight lines, circles, programmed shapes, and straight beveling.

### ■ Light Weight

Easy tear down allows unit to be disassembled and moved by one person.

### ■ Oxy-Fuel or Plasma Cutting Capabilities

Can use either oxy-fuel or plasma cutting systems.

## KOIKE SANSO KOGYO CO., LTD. Overseas Division

1-9-3, Onodai, Midori-ku, Chiba, Chiba 267-0056, Japan

Tel: +81-43-239-2130 Fax: +81-43-239-2129 URL: <http://www.koikeox.co.jp>

### KOIKE EUROPE B.V.

Grote Tocht 19, 1507 CG  
Zaandam Holland  
Tel : +31-75-612-7227  
Fax : +31-75-670-2271  
<http://www.koike.nl>

Koike Engineering Germany GmbH

### KOIKE ARONSON, INC. (RANSOME)

635 West Main Street,  
Arcade, NY 14009 USA  
Tel : +1-585-492-2400  
Fax : +1-585-457-3517  
<http://www.koike.com>

### KOIKE KOREA ENGINEERING CO., LTD.

1318-26, Daekwng-Dong,  
Kimchon-City,  
Kyoung Sangbuk-Do, Korea  
Tel : +82-54-439-3711  
Fax : +82-54-439-3713  
<http://www.koike.co.kr>

### KOIKE ENGINEERING TANGSHAN CO., LTD.

Xi Chang Road East side  
New&Hi-tech Development Zone,  
Tang Shan City, Hebei Province,  
063020, P.R.China  
Tel : +86-315-317-3111  
Fax : +86-315-317-3222  
<http://www.koike.cn>

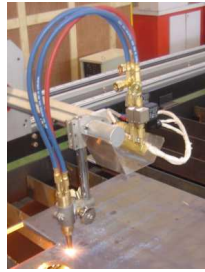
# KOIKE

[www.koike.com](http://www.koike.com)

## Machine Outline

The PNC-10 Elite CNC cutting machine is a compact economical solution for oxy-fuel and plasma cutting.

A low profile and small installation area allows the PNC-10 Elite to be transported easily and stored efficiently.



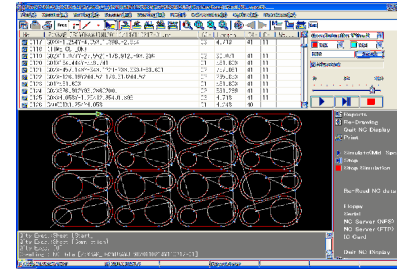
Motorized torch riser with Heat shield



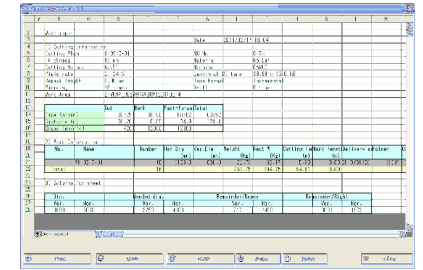
Oxy-Fuel cutting or Plasma cutting capabilities



D420 controller includes a 48 shape library and a simple to use interface.



<Step 2> Nesting & Cutting sequence

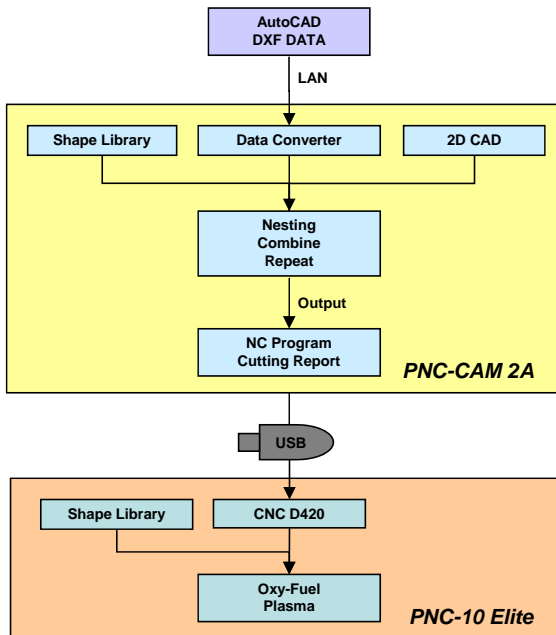


<Step 3> Output Work Report

## PNC-CAM 2A Specifications

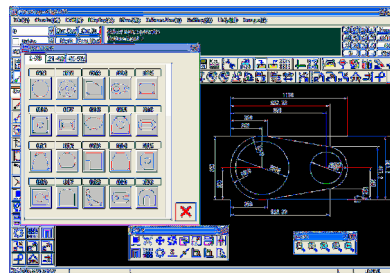
Model	PNC-CAM 2A [KAP Portable CNC editions with Auto Nesting]	
Software module	Figure Definition	KOIKE 2-Dimension CAD
		AUTOCAD DXF Data Reading/Writing
		Standard Shape Library, 55 patterns
		Auto measuring of lines
		Corner loop for Plasma cutting
	Nesting	DFX and DWG parts convert
		Auto nesting for Max. 12 kinds shapes
		Various parts nesting
		Automatic combination of a part
		Copy of Nesting data for repeat cutting
Sequence	Gap setting for a part and a part	
	Auto sequence setting	
	Center piercing for Small circle cutting	
Single part cutting	Lead-in/Lead-out length change	
Tools	Sequence setting without Nesting operation	
NC Program output	Gas cutting, Plasma cutting and Line Marking	
Work report output	USB memory (Extension txt.)	
	EXCEL format	
	Yield rate of plate	
	Cutting/Marking time and length	
	Part information	
Part Information	Plate Information	
	Other information	
	Plate thickness	
	Material	
	Surface condition	
	Quantity	
	Part weight	
Plate information	Square size of Part weight	
	Cutting length	
Part Folder	Plate size	
Supply USB memory	Remnant plate size	
	Fixed folder	
	Software and License	KAP Portable software, License and Install program in USB memory
Required Hardware	Instruction manual	PDF file and Tutor function in USB memory
	Operation System	Windows 7, 8 or higher version
	Display	1,024 X 768 dots (XGA) or bigger
	Hard disk	2 GB or bigger to be used

# PNC-CAM 2A KAP Portable CNC editions with Auto Nesting Function



An intelligent CAD/CAM software that generates a part drawing to the creating of NC Cutting data within a minute.

- AUTOCAD DXF Data Reading/Writing through LAN.
- Easy NC program output to PNC-10 Elite by USB memory.



<Step 1> Parts Drawing