



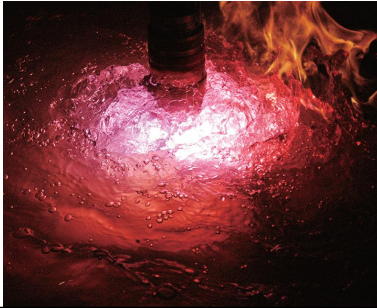
New Standard for the Stainless Steel Cutting

KOIKE SUPER PLASMA HiFocus Series

The excellent quality achieved in the stainless steel cutting by HiFocus Series was not seen in plasma cutting till now. HiFocus series sets new standards for plasma cutting of stainless steel.

Overview

The plasma unit provides high quality cutting in stainless steel. Dry cutting or Under Water cutting is possible depending to the application, and same excellent quality and features are achieved by both. Under water cutting can be also used as an alternative for Water Injection Plasma. 280A, 440A, 600A plasma unit are available for cutting of Stainless Steel max. 150mm thickness. In addition, aluminum can also be cut with high quality.



Feature

- Small diameter nozzle and optimal cooling structure achieves high corner accuracy and verticality.
- Silver surface cut till 19mm thickness in Stainless Steel by underwater cutting.
- Same torch unit for both Dry and Under Water Cutting.
- Max. cutting capacity of 150mm in Stainless Steel at 600A.
- One-touch attach&detach design torch head.



KOIKE SUPER PLASMA HiFocus Series - Main Specification

		Power Supply Model	HiFocus 280i neo	HiFocus 440i neo	HiFocus 600i neo
Power Supply	Input Power Supply	Three-phase 400/440V 50/60Hz Three-phase 200/220V 50/60Hz (only 280i and 440i)			
	Rated Input	67kVA	127kVA	180kVA	
	Rated Current	280A	440A	600A	
	Current Adjustable Range	10~280A	10~440A	10~600A	
	Usage Rate	100%			
	Plasma Gas	Ar/H ₂ /F ₅ (N ₂ :95%+H ₂ :5%)			
	Shield Gas	N ₂			
	Working Pressure	0.9~0.99MPa			
	Outline Dimension (W×L×H)	680×1030×1450mm		680×1030×1450mm ×2 units	
	Cutting Thickness (Stainless Steel)	Dry	2,3~50mm	6~100mm	6~150mm
Under Water		10~30mm	10~70mm	10~70mm	
Torch	Torch Model	PerCut 450M		PerCut 611	
	Max. Working Current	440A		600A	
	Usage Rate	100%			
	Cooling System	Water Cooling (Circular)			
	Torch Lead Length	1.5m			
	Outline Dimension	φ57×450mm			

